



2.4GHz Bidirectional Amplifier

Item # 24202

This 2.4GHz bidirectional amplifier covers 2400~2500MHz ISM band and designed for all applications where high speed switching between Tx and Rx is required.

Standard unit comes with 20dB Tx gain. This can be modified to any desired value upto 22dB at the factory. The Rx side gets a full 18dB of gain, improving the receive sensitivity by many folds.

The receive side is fitted with 2400~2500MHz band pass filter.

A highly efficient amplifier that consumes only 45mA of power during Rx mode. The unit is powered with a 6V DC power supply.

Salient features include:

- 2Watt peak output power
- 20dB Tx gain
- 16dB Rx gain
- High-speed switching between Tx/Rx for all data rates.
- Highly efficient in power consumption
- Made in the USA



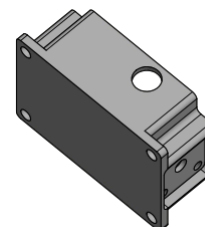
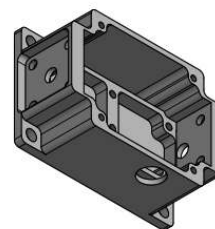
The complete set includes:

- The amplifier
- Universal power supply (110~240VAC to 6 V DC)

Specifications

Electrical:

Operating Range	2400 -2500 MHz
Operating Mode	TDD, Time Division duplex,
Transmit Power	1- 2W (33dBm peak)
Transmit Gain	20 dB (can be modified from 0-22dB)
Transmit input Power	0dB min +/- 1 (trigger point) 27 dB max
Receive Gain	18 dB
Switching Speed	Less than 1us
Noise Figure	3.5 dB
LED indicators	Red for Receive Green for Transmit
Power Consumption @ 6V DC	Rx: 40mA, Tx: 1200mA,
Operating Temp	-40 °C to + 70 °C



Mechanical:

Dimensions	2.55" x 1.35 (including connectors)
RF connectors	N Females
DC input	Via DC Jack 2.5mm
Weight	2 Oz